

**59<sup>th</sup> WORLD CONGRESS OF CHESS COMPOSITION**  
**Belgrade, Serbia** **July 30<sup>th</sup> – August 6<sup>th</sup>, 2016**

**14<sup>th</sup> Romanian Tzuica Tourney**  
**Judges: Vlaicu Crişan & Eric Huber (Romania)**

**Theme:** Help-selfmates (**hs#n/hs=n**) with at least two **Rundlaufs** of at least 4 moves.  
 The Rundlaufs may be presented in two different solutions or in the same solution, for one side or more. Linear circuits are not allowed.

Please take in consideration the following **definitions**:

**1.** In a **help-selfmate** problem in 'n' moves (denoted hs#n), White starts and Black collaborates with White in order to reach a position of s#1 (selfmate in one move) at move 'n' (the last move). Helpselfstalemates are also accepted.

**2. Rundlauf:** A piece returns to a previously occupied square after it occupied at least 2 other squares.

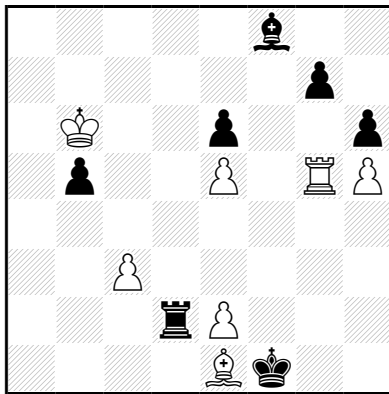
In a Rundlauf of 4 moves, 3 other squares are occupied consecutively.

Problems with twins or zeroposition are allowed.

All fairy pieces and conditions are accepted, provided that the problem is checked by a known solving program.

**Example 1 for Orthodox section**

Bo LINDGREN  
feenschach 1997 (v)



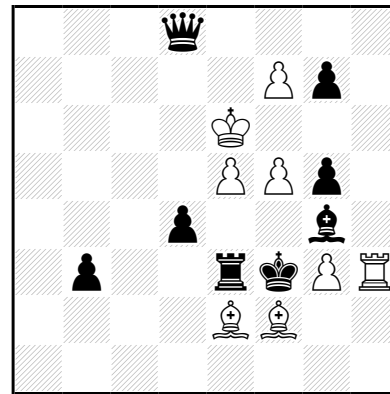
hs#7 ( 7 + 7 )

1. Rf5+ Kg2 2. Rf2+ Kg3 3. Rg2+ Kf4 4. Rg5 Rd6+  
 5. Kc5 Ra6+ 6. Kd4 Ra2 7. Bd2+ Rxd2#

Rundlauf of wR and bR during the same solution.

**Example 2 for Fairy Section**

Mario PARRINELLO  
2<sup>nd</sup> Prize, Xmas TT, France-Echecs 2011



hs#4 2.1.1.1.1.1 ( 8 + 8 )  
Isardam

1. Rh6 Rxe5 2. Be3 Rc5 3. Rh2 Rc3 4. Rf2+ Rxe3#  
 1. Bc4 Bxf5 2. g4 Bg6 3. Bf1 Bh5 4. Bg2+ Bxg4#

Rundlauf of bR and bB in two different solutions.

**Prizes** in bottles of Tzuica

The tourney is open worldwide, however the prizes are for congress participants only.

Please send entries to Eric Huber by e-mail at [hubereric@yahoo.fr](mailto:hubereric@yahoo.fr) until July 31<sup>st</sup>, or during Congress to the Romanian delegate Dinu-Ioan Nicula until Wednesday, August 3<sup>rd</sup>, 8 p.m.