

59th WCCC Belgrade 30 July – 6 August 2016

5-days tourneys

(for the Congress participants only)

Group A – Announcement

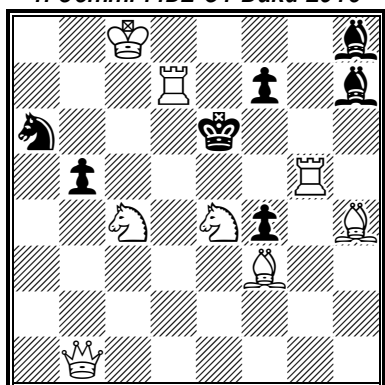
Theme: **#2** with 2 thematic phases, try + solution. Both key-moves sacrifice a white piece to the black king, once on a square of the same colour as the BK square (diagonally from BK), the other time on the square of opposite colour (orthogonally from BK).

No fairy conditions or pieces allowed.

Example:

Marjan Kovačević

4. Comm. FIDE OT Baku 2016



#2

8+7

1.Rf5? ~ 2.Sg5# **1... Kxf5 2.Sc5#** (2.Sg5?)

1... Bxf5 2.Rd6# 1... Bf6 2.Rxf6#

1... f6!

1.Sf6! ~ 2.Re5# **1... Kxf6 2.Rg6#** (2.Re5?)

1... Bf5 2.Qxf5# 1... Bxf6 2.Bd5#

1... bc4 2.Qb6#

Judge: Marjan Kovačević

Limit: **1-1** (one problem - one author / one author - one problem)

Deadline: Tuesday, 2 August, 20:00h

IMPORTANT NOTE: The preferable way is to enter problems directly to the MatPlus.Net, section Originals/WCCC2016 Official Tourneys.

Alternative way: give your entries on papers to the director Dean Miletić or Vladimir Podinić.