

59th WCCC Belgrade 30 July – 6 August 2016

5-days tournaments

(for the Congress participants only)

Group B – Announcement

Theme: **Series reflex mate in 3-8 moves** with at least 2 solutions. Each solution contains at least 1 attempt, where White is obliged to mate Black because of a harmful unpinning of a white piece, or because of a harmful pinning of a black piece.

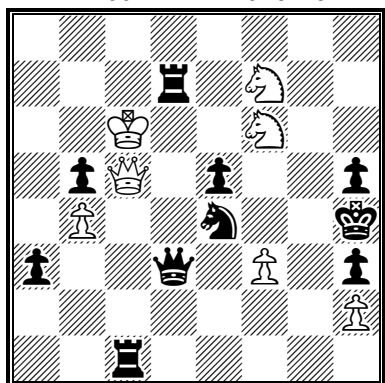
No other fairy conditions and no fairy pieces.

Examples:

A

Menachem Witztum

10th Pl. BIT 2015 - C



Ser-r#3 2 sol 7+10

1. **Sd6!** 2. Sc4 3. Q:b5 Qd6#
(1. S:e5? 2. Sc4 3. Q:h5#)

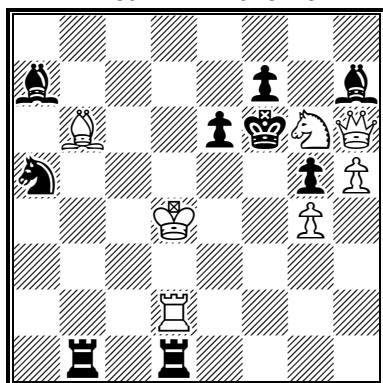
1. **Sd5!** 2. Sc3 3. Qb6 Qd5#
(1. S:e4? 2. Sc3 3. Qf2#)

Choosing the right paths of WSs to avoid harmful unpinning of WQ.

B

Marjan Kovačević

1st Pl. BIT 2015 - C



Ser-r#5 2 sol 7+9

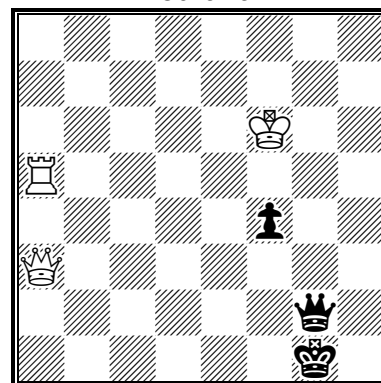
1. **B:a7!** (1. Kd3? 2. Bd8#) 2. Kd3
3. **Bf2!** (3. Kc3? 4. Rf2#)
4. Kc3 5. Rc2 Rb3#

1. **R:d1!** (1. Kc5? 2. Rf2#) 2. Kc5
3. **Rd8!** (3. Kd6? 4. Bd8#)
4. Kd6 5. Bc7 Rd1#

Preparatory plans to avoid harmful unpinning of WB&WR.

C

Scheme



Ser-r#4 3+3

1. **Rh5!** (1. Qg3? 2. Ra1#)
2. Qg3 3. Kg5 4. Kh4 Q:g3 #

Choosing the right order of moves to avoid harmful pinning of BQ (not thematic because of 1 solution only).

Judge: Miodrag Mladenović

Limit: 1-1 (one problem - one author / one author - one problem)

Deadline: Tuesday, 2 August, 20:00h

IMPORTANT NOTE: The preferable way is to enter problems directly to the MatPlus.Net, section Originals/WCCC2016 Official Tournaments.

Alternative way: give your entries on papers to the director Dean Miletić or Vladimir Podinić.