

## Champagne Tourney Belgrade 2016

The Tourney is opened only to Congress Participants  
(collaboration between participant(s) and non participant(s) is allowed)

The Tourney is divided in 2 sections (with separate awards) :

A . ProofGames B. Any other kind of Retro problems

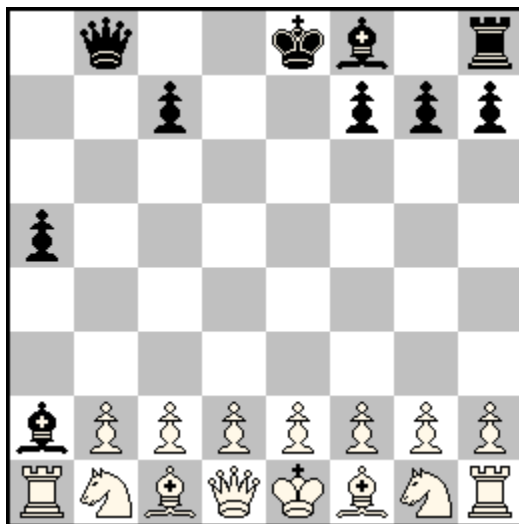
Theme : **Circuit** (see also Rundlauf in Tzuica Tourney)

A piece returns to a previously occupied square after it occupied at least 2 other squares.

For section A, it is furthermore required that the circuiting piece is captured.

Example for Section A :

### Marco BONA VOGLIA Best Problems 2007



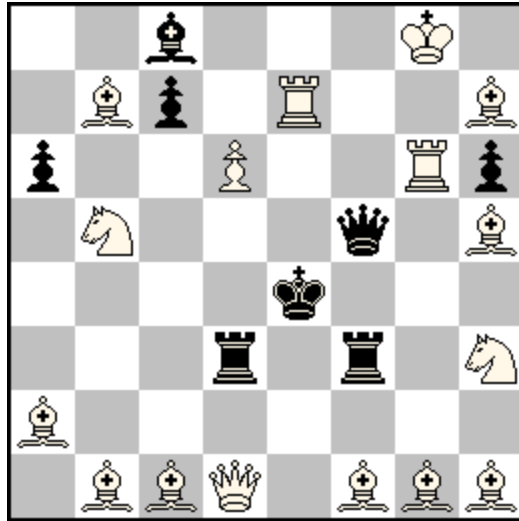
SPG 9,0 (15+10) C+

1.a4 b5 2.a×b5 a5 3.b6 Ra7 4.b×a7 é5 5.a×b8=N Né7  
6.N×d7 Nç6 7.N×é5 Bè6 8.N×ç6 Ba2 9.Nb8 Q×b8

The Knight promoted on b8 performs a circuit before being captured

Example for Section B :

## Yuri LEBEDEV 1° Prize Shakhmatnaya Kompozitsiya 2002



Is this a legal mate? (16+8)

Last moves are :

**-1.é5×d6 e.p.‡ d7-d5 -2.Rç6-g6+ Rd5-d3 -3.Rç2-ç6+ Rd3-f3**  
**-4.Rg2-ç2+ Qf3-f5 -5.Rg6-g2+ Qg2-f3**

The position is legal!

Rook g6 performs a circuit in retro-play.

Fairy conditions (but not fairy pieces) allowed in both sections.

Maximum 3 entries per composer per section.

(collaboration counts for 1 full entry)

Maximum 1 non computer tested entry per composer in section A

Prizes in each section :

a Champagne bottle for the first place

a Phenix book for the best placed problem by a young composer (young = up to 25 years)

Entries to the judge, Michel Caillaud, by Wednesday 3rd August 9:00 PM