

59th WCCC Belgrade 30 July – 6 August 2016

Quick Composing Tourneys (3 hours)

(for the Congress participants only)

Group B – Announcement

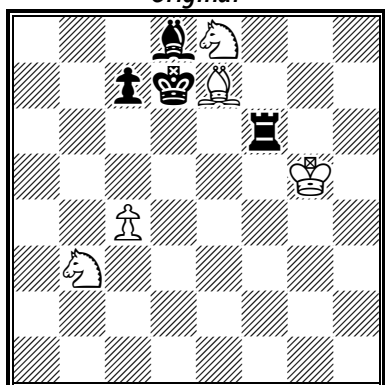
Theme: **h#2** with at least two phases (solution or/and set play, no twins). In each phase White plays his first move (W1) on the same square.

No fairy conditions or pieces allowed.

Example:

Živko Janevski

Original



1.Rb6 **Sf6**+ 2.Kc6 Sa5#

1.Rf7 **Bf6** 2.Ke6 Sc5#

Judge: Živko Janevski

Limit: **1-1** (one problem - one author / one author - one problem)

Deadline: Sunday, 31 July, 23:15h

IMPORTANT NOTE: The preferable way is to enter problems directly to the MatPlus.Net, section Originals/WCCC2016 Official Tourneys.

Alternative way: give your entries on papers to the director Dean Miletić.