

Belgrade 2016

19th SABRA Composing Tourney

An orthodox H#2 is required:

A white piece A and a black piece B are in the king's line at the initial position (or at a certain point during the play)

In the final position, pieces A and B are not in the king's line. The checkmate is in the abandoned king's line, behind the squares where A and B were.

Judge: Menachem Witztum

Prize: 1 bottle of **SABRA** - the liqueur of Israel for your enjoyment and 2 bottles of selected Israeli liquers.

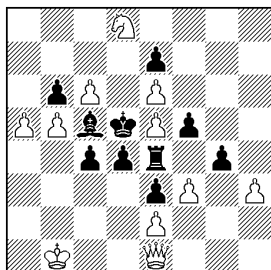
Entries should be submitted to **Paz Einat** by email: paz@pazeinat.com until 3/8/2016 at 19:00.

Open to all composers but those not participating in the congress are limited to one problem only and only congress participants can receive prizes.

Examples :

Menachem Witztum

No. 921 -Polski Zwiazek Szachowy 7/2016

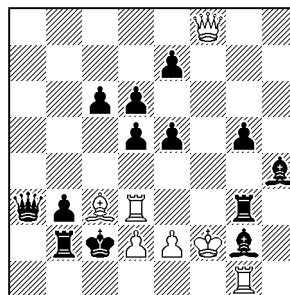


H#2 2.1.1.1 (C+) (11+10)

1. g4xh3 Qe1-h1 2.
Re4-h4 f3-f4#
1. b6xa5 Qe1xa5 2.
Bc5-a7 b5-b6#

Menachem Witztum

No. 927 -Polish chess federation 2016

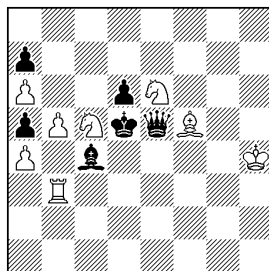


H#2 2.1.1.1 (C+) (7+13)

1. e5-e4 Rd3-f3 2.
(Qf5?) e4xf3 Qf8-f5#
1. c6-c5 Bc3-b4
2. (Qc8?) c5xb4 Qf8-c8#

Emanuel Navon & Menachem Witztum

KoBIChess 7/2016



H#2 2.1.1.1 (C+) (8+6)

Set 1... Bf5-c2 2. Bc4xb3 Bc2xb3#
1... Rb3-f3 2. Qe5xf5 Rf3xf5#
Sol 1. Bc4xb3 Bf5-b1 2. Bb3-a2 Bb1xa2#
1. Qe5xf5 Rb3-g3 2. Qf5-g5+ Rg3xg5#